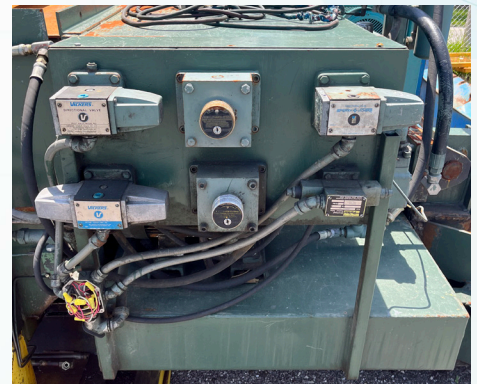


MAREN 122



Product Code	151102
Manufacturer	Maren
Model	122
Type	Manual-Tie Baler
Condition	Used
Motor	20HP
Cylinder Bore	7"
Bale Size	72" x 30" x 36"
Feed Opening	30" x 30"
System Pressure	1,700psi

For additional details on this or other equipment, please contact our sales team at sales@elyent.com or give us a call at 216-252-8090 (toll free at 888-822-5377).



Ely Enterprises

Your complete source for new, used, and rebuilt equipment.

3809 Broadway Ave.
Lorain, OH 44052

216-252-8090 • sales@elyent.com

Authorized Distributor for:



**NEW EQUIPMENT • USED EQUIPMENT • RENTAL EQUIPMENT
SALES • 24-HOUR SERVICE • PARTS • BALING WIRE**